

# CONTRASTING IN COMFORT



A new rear addition to a single-storey property in Perth adds a contemporary edge to a heritage build while respecting its roots

Photography Jack Lovel Styling Jo Carmichael



"THE NEW PART OF THE HOUSE ON THE GROUND FLOOR IS A CONTINUATION OF THE EXISTING CENTRAL HALLWAY"



Extensions, extensions, extensions – why move when you can simply improve? As conscious consumerism starts to seep into the property world, it's a challenge more and more homeowners are willing to face if they can find an architect whose work aligns with their own aspirations. But, as you flick longingly through portfolios of extensions, it appears such renovation work is split into two main categories – either a contrasting addition that highlights the differences between new and old, or a more sensitive retelling of the existing build where materials and design elements seamlessly line up with what is already there. But, at this humble brick abode in Perth's Fremantle, Cast Studio were clear that neither of these routes were right for their client. Taking the road less travelled, the architects instead sought to "contrast comfortably." They translate, "the new architecture is unmistakably contemporary, but it still feels like it shares some DNA with the existing single-storey brick cottage." Replacing what were a couple of make-shift lean-tos and rusting sheds, the extension sits directly behind the heritage home, peering out over its pyramid roof with an upper level that doubles the height of the original living space. Connecting internally via the traditional centralised corridor, the concrete bottomed ground level opens up to encompass an airy kitchen (complete with the most beautiful open shelving system) and dining space which, when the doors are left open, leads naturally to a walled courtyard. Rather than battling for dominance in the design, the traditional brick and contemporary concrete elements find a steady equilibrium which feels balanced yet still contrasts just as the creative team wished, "comfortably."





"THE HOUSE  
REFLECTS AND  
ENHANCES  
THE OWNER'S  
RELAXED LIFESTYLE"

"We keep coming back to concrete flooring as a robust, beautiful material that withstands daily coffee spills, sandy feet and dog hairs! A light polish reveals a beautiful texture but the overall effect is subdued and acts as a backdrop to furnishing and artwork," say Cast Studio





## HOME PROFILE

### PROPERTY DESCRIPTION

Looking out over Fremantle's stunning coastline from behind a heritage home is a brand new double height rear extension. Extending out from the central hallway of the existing build, an open-plan kitchen and dining area forms the new ground level while a master suite and balcony sit above. Openings for light and breeze are dotted on each side of the new volume to welcome these natural elements into the plan at all times of the day. The deep etchings of these glass facades creates eaves that offer shade and protection. A ground floor walled courtyard leads out from the kitchen and is finished off with an external shower – ideal for those post-beach-walk feet. Outdoor living has also been considered upstairs where a planted pergola sits front and centre.

### LOCATION

Fremantle, Perth, Australia



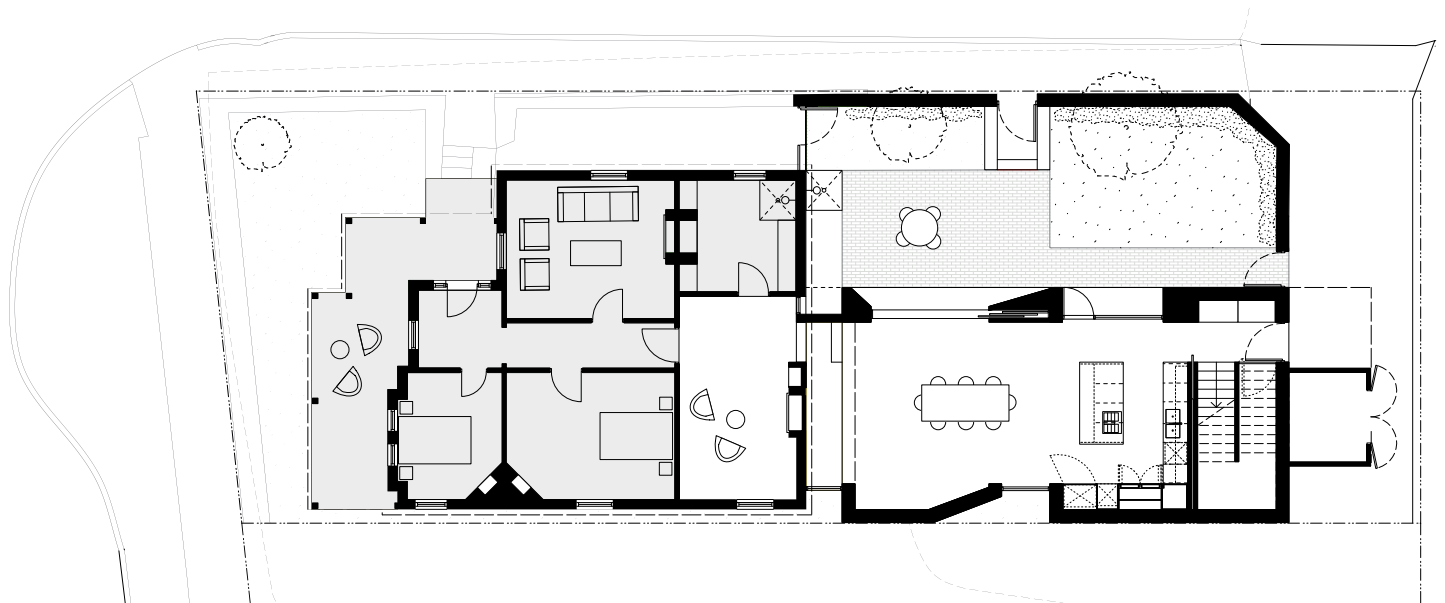


"THE SHELVES' RAW STEEL RODS SHOW  
A CRAFT AND ORDER OF YEARS GONE BY"









## MEET THE DESIGNER

### Cast Studio

Driven by the outlook that architecture is so much more than just buildings, Cast Studio create homes with heart

### What inspired the kitchen design?

Our clients had so many beautiful objects collected from their travels and we just couldn't bear to put them into closed cupboards. The open plywood shelves suspended on steel rods were a cost-effective way to curate and present these. The grain of the plywood cabinetry (along with the cedar door and window frames) provides character as well as a softness that offsets the concrete floor and bagged lime-wash bricks. The shelves' raw steel rods show a craft and order of years gone by.

### What is your favourite part of this project?

Its economy. The extension was built with a modest budget, achieved primarily through a compact floor area and a simple palette of 'everyday' materials. The design is a celebration of daylight, views and volume over high end materials or large rooms. 'Standard' finishes are eschewed, with the ceilings and cabinetry constructed from timber, plasterboard finishes entirely avoided and the external materials used internally, thereby increasing the house's lifespan.

## PROJECT NOTES

### ARCHITECT

Cast Studio

### STYLING

Jo Carmichael

### BUILDER

Perth Builders

### STRUCTURAL ENGINEER

Burdett & Goodison Engineers

### KITCHEN

Concrete elements, Concrete Studio; ply cabinets, Worldwide Timber Traders; cooktop and oven, Siemens; integrated fridge, Fisher & Paykel

### BATHROOM

Basin, Rogerseller; Cleanflush, Caroma; shower, Monsoon; tiles, Original Ceramics

